

# Sampling

Aluminum alkyl samples can be taken safely from permanently installed product pipelines.

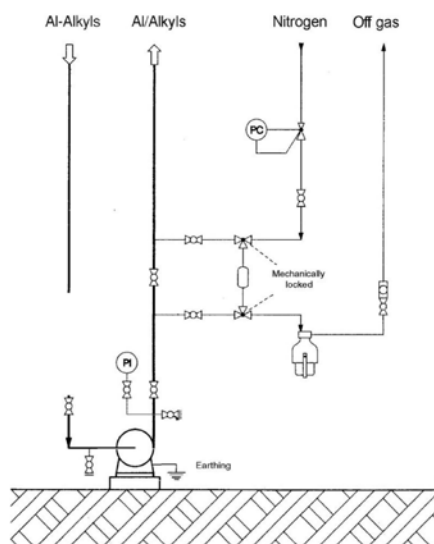
We recommend a sampling device with a dosing vessel, which is built into the bypass in an alkyl pipeline. The flow diagram below shows the connection of suction and pressure side of the pump to the sampling device.

By shuttering off the three-way valves (connected mechanically with each other) a defined quantity of liquid is enclosed in the dosing vessel. This is then discharged into the sample vessel by nitrogen pressure.

The mechanical coupling of the three-way valves ensures that a limited quantity of aluminum alkyl, defined by the size of the dosing vessel, is always sampled, since the position of the three-way valves only allows three operating functions:

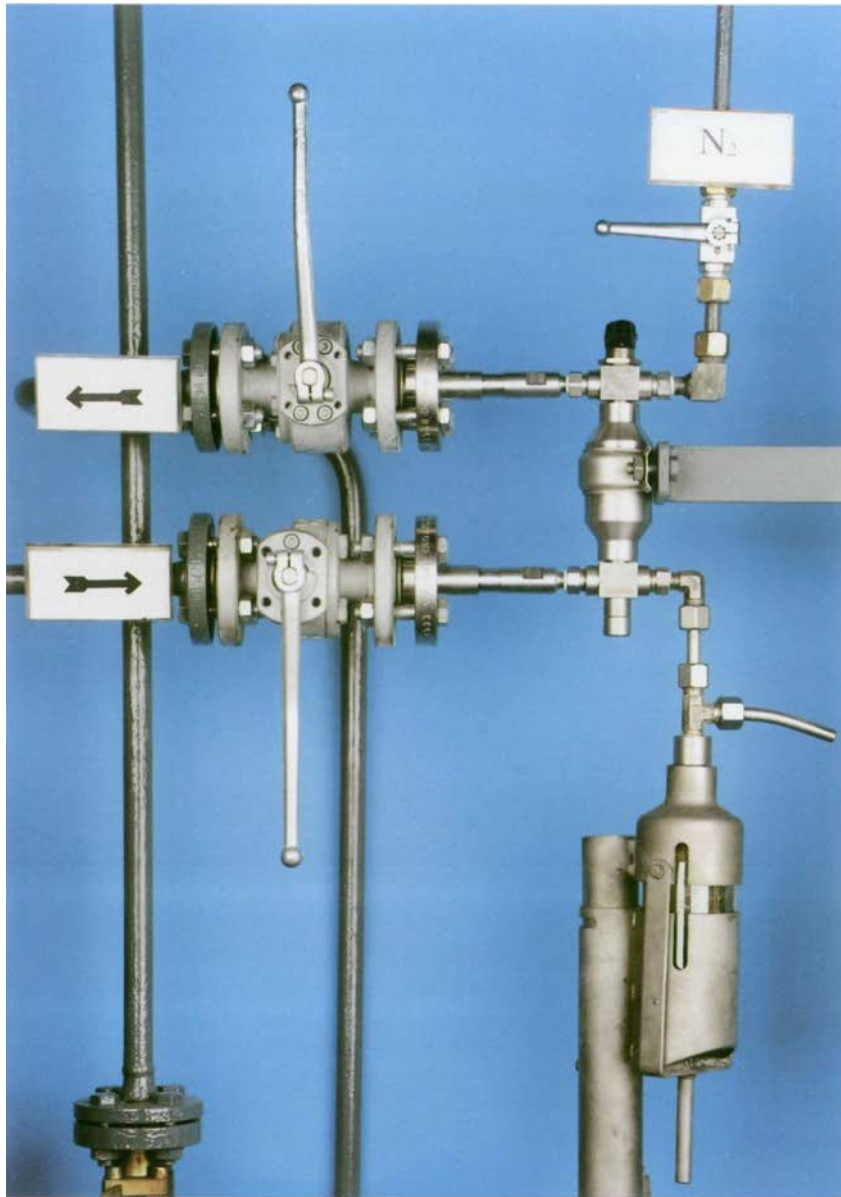
1. Flow of liquid through the dosing vessel
2. Closed
3. Flow of nitrogen through the dosing vessel

Our small container can be used as a sample vessel. It guarantees safe transport of the sample from the works to the analytical control laboratory., and safe storage of the reserve sample. An exact description of the sampling device and the operating instructions for sampling from pipelines is available (TI-B 04)



## Sampling

---



Sampling device mounted  
on a frame